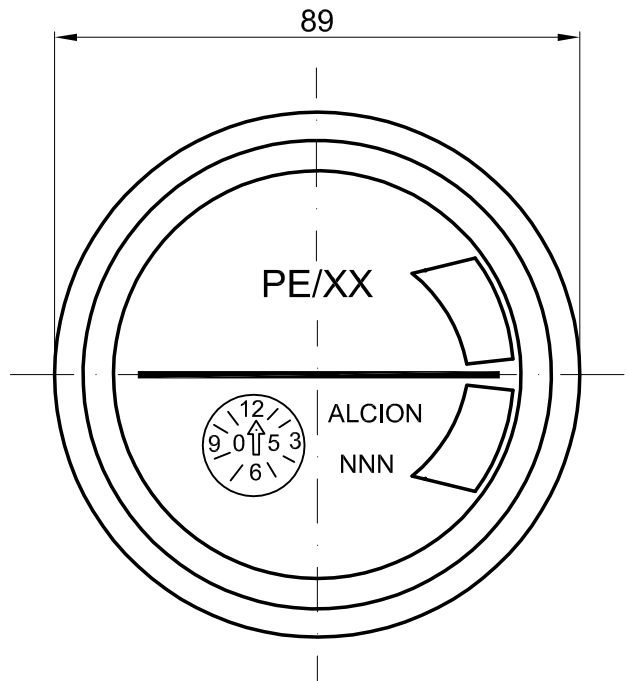
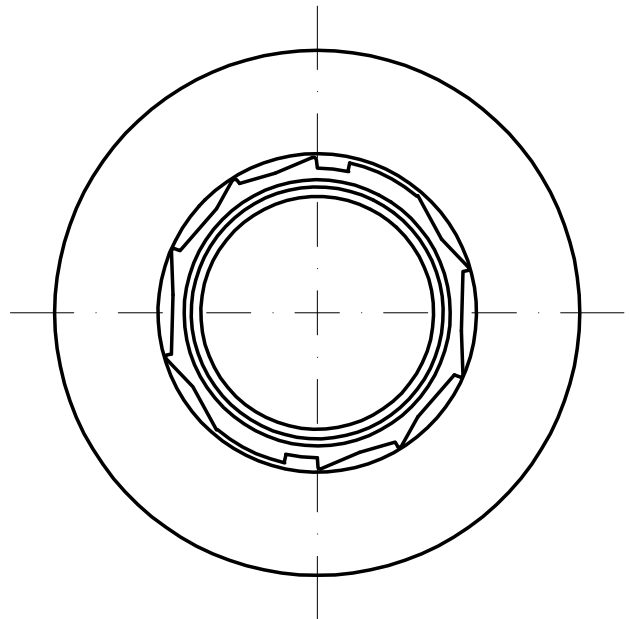
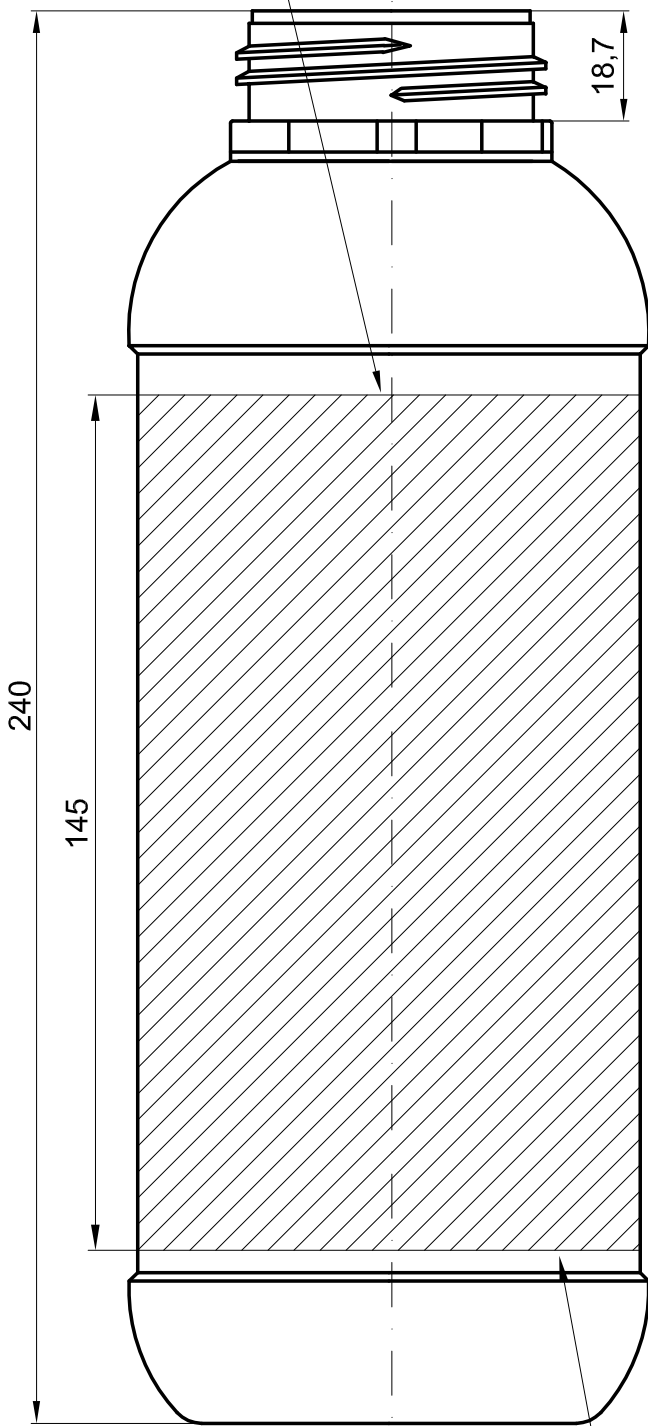
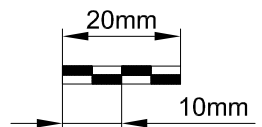


Area serigrafiable
Screen printing area
Surface serigraphier



NNN=IDENTIFICACIÓN FIGURA
NNN=CAVITY IDENTIFICATION
NNN=IDENTIFICATION FIGURE

Desarrollo 277mm
Development 277mm
Desenveloppement 277mm



No es recomendable el serigrafiado continuo en todo el desarrollo del envase. Deberá dejarse sin unir 10 mm.

We do not recommend continuous silkscreen printing on the entire packaging. 10 mm must be left unjoined.

Il n'est pas recommandé de sérigraphier l'emballage en continu. Une reserve de 10 mm est necessaire.

Ø ROSCA Ø SCREW Ø BAGUE	49,6mm
Ø INT. CUELLO Ø OPENING Ø INT. COL	41,7mm
PASO PITCH PAS	4mm

MODELO MODEL-MODELE	TAPON NECK-COL	CAPACIDAD CAPACITY-CAPACITE	MATERIALES-MATERIEL
817	842-843	1000ml	COEX
NORMA CIERRE NORME CLOSING NORME BAGUE	DIN KS 50		PLANO-DRAWING-PLAN
			A421000-B

Firma-Signature:

Digital



ALCION Plasticos, S.L.
Ctra. Aldala a Xirivella nº57
46960 ALDAILA (Valencia) ESPAÑA
Tel. 961 501 704 Fax. 961 509 811
E-mail: plastics@alcion.com
http://www.alcion.com